



natagora

La nature avec vous



**Belgium for
Biodiversity**

Concrete case – a Species Action Plan delivered during a integrated LIFE project



Great Crested Newt *Triturus cristatus*

Article 17

	range	pop	habitat	final
ATL:	U2	U2	U2	U2-
CONT:	U1	U1	U1	U1+

Red List of Endangered Species in Wallonia Near-Threatened c1c2

Species Action Plan developed during the BNIP



Pic by Natuurpunt - Hugo Willocx

A true team work

led by H el ene
Ghyselinck



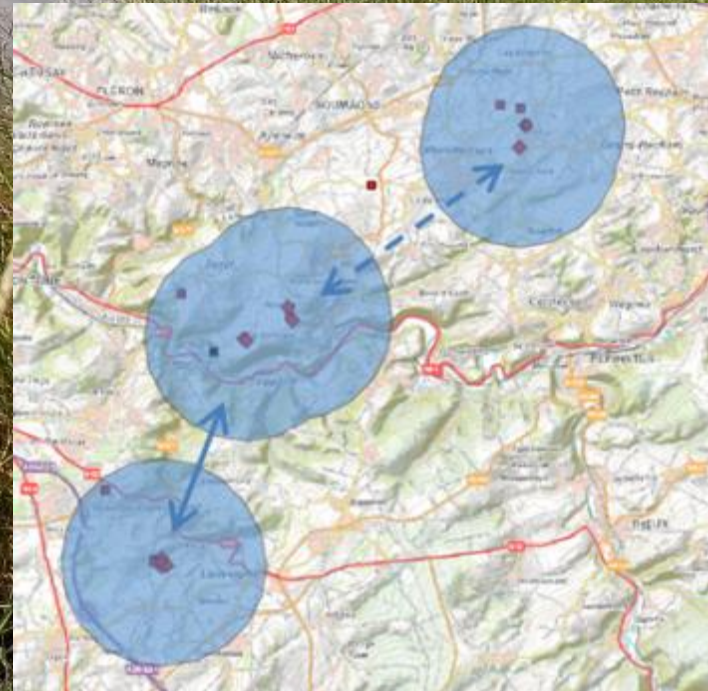
Basic idea: to develop an ambitious program of **pond** creation or restoration

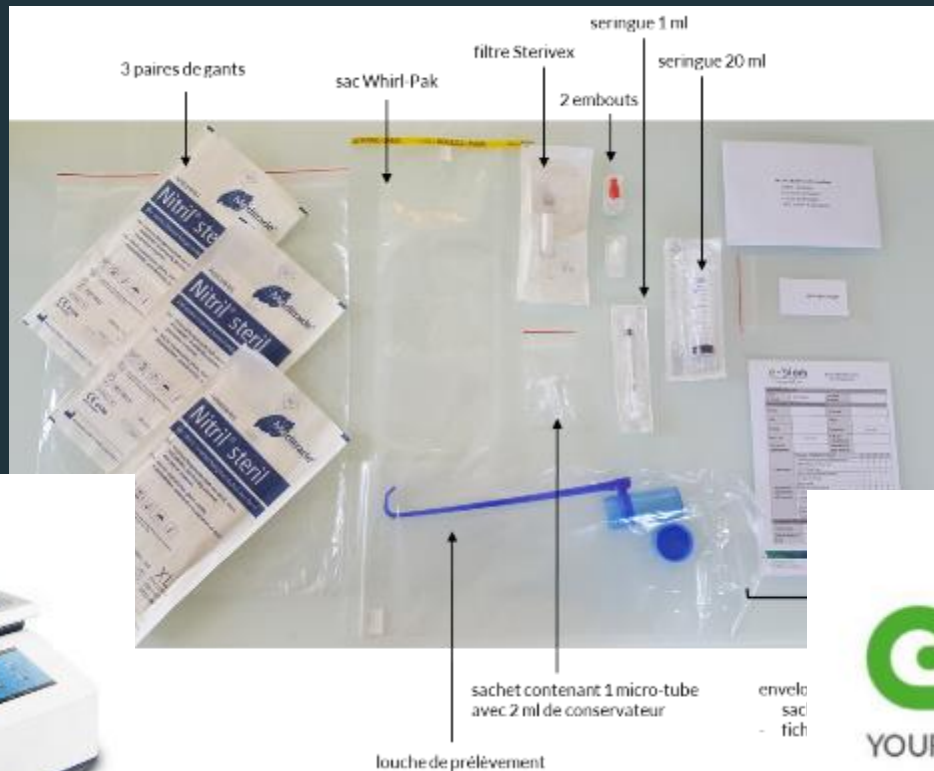
Where to set these ponds?

-> connecting (meta-) populations

-> need for a extensive knowledge of actual presence of the species (occupied ponds)

Method: Large-scale eDNA inventory





qPCR with specific primer and SyBr Green detection
Target: mitochondrial *cyt b*

Large-scale sampling scheme

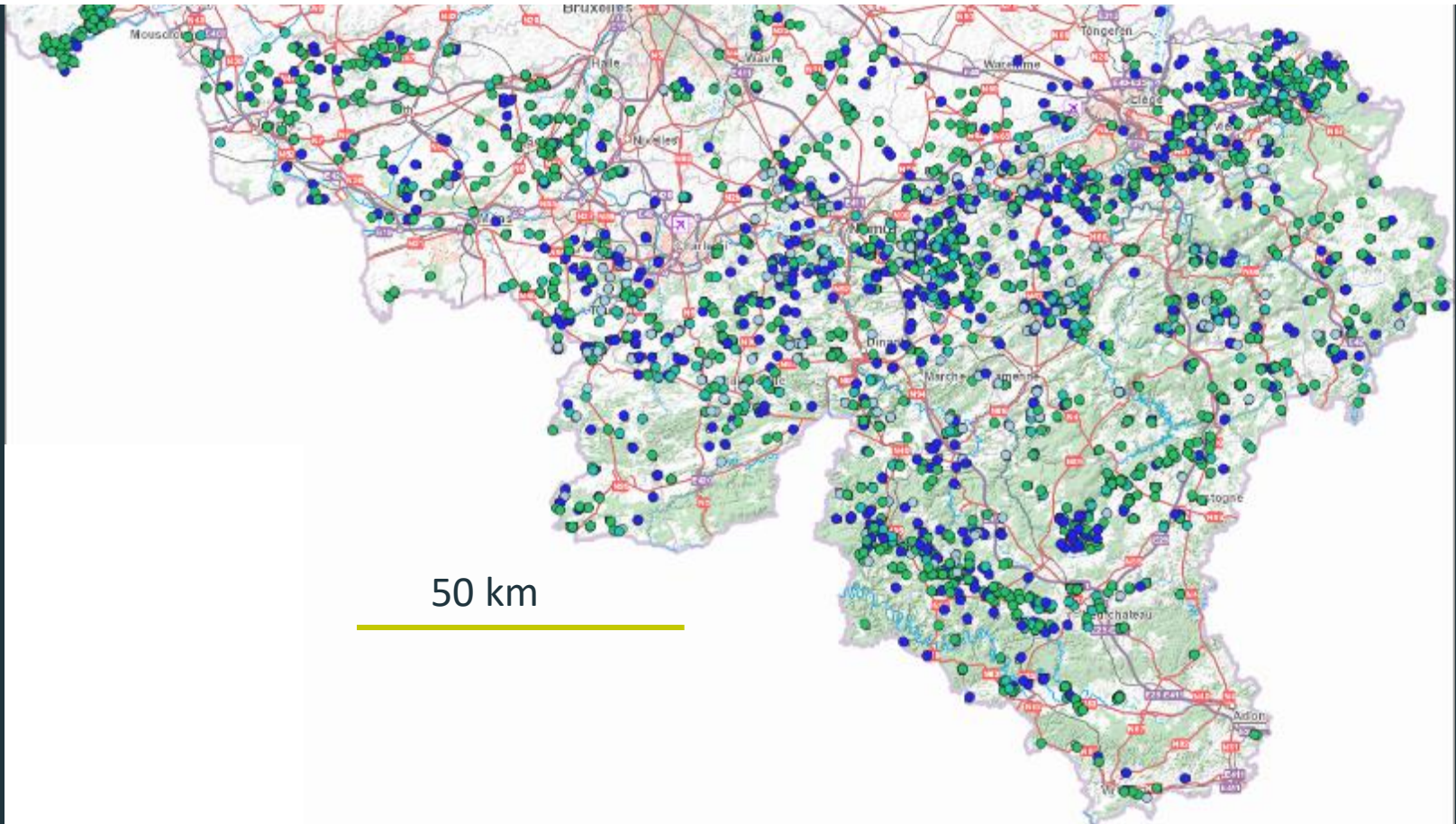
– probably one of the most ambitious specific inventory ever in Wallonia

Step 1: building up of a cartographic database of 50 000 existing ponds

Step 2: preselection of 4000 potential ponds

Step 3: cross-selection with known occupied ponds

Step 4: prioritization of 1000 ponds – « not known as occupied with some potential »



Huge sampling effort

Average number
of visited pond
per working day
8.42

Average number
of sampled pond
per working day:
2.45

3 058 visited ponds

801 eDNA-sampled ponds

Several days of training & meeting

327 working days with 2 samplers

About 20 samplers (mostly trainees)

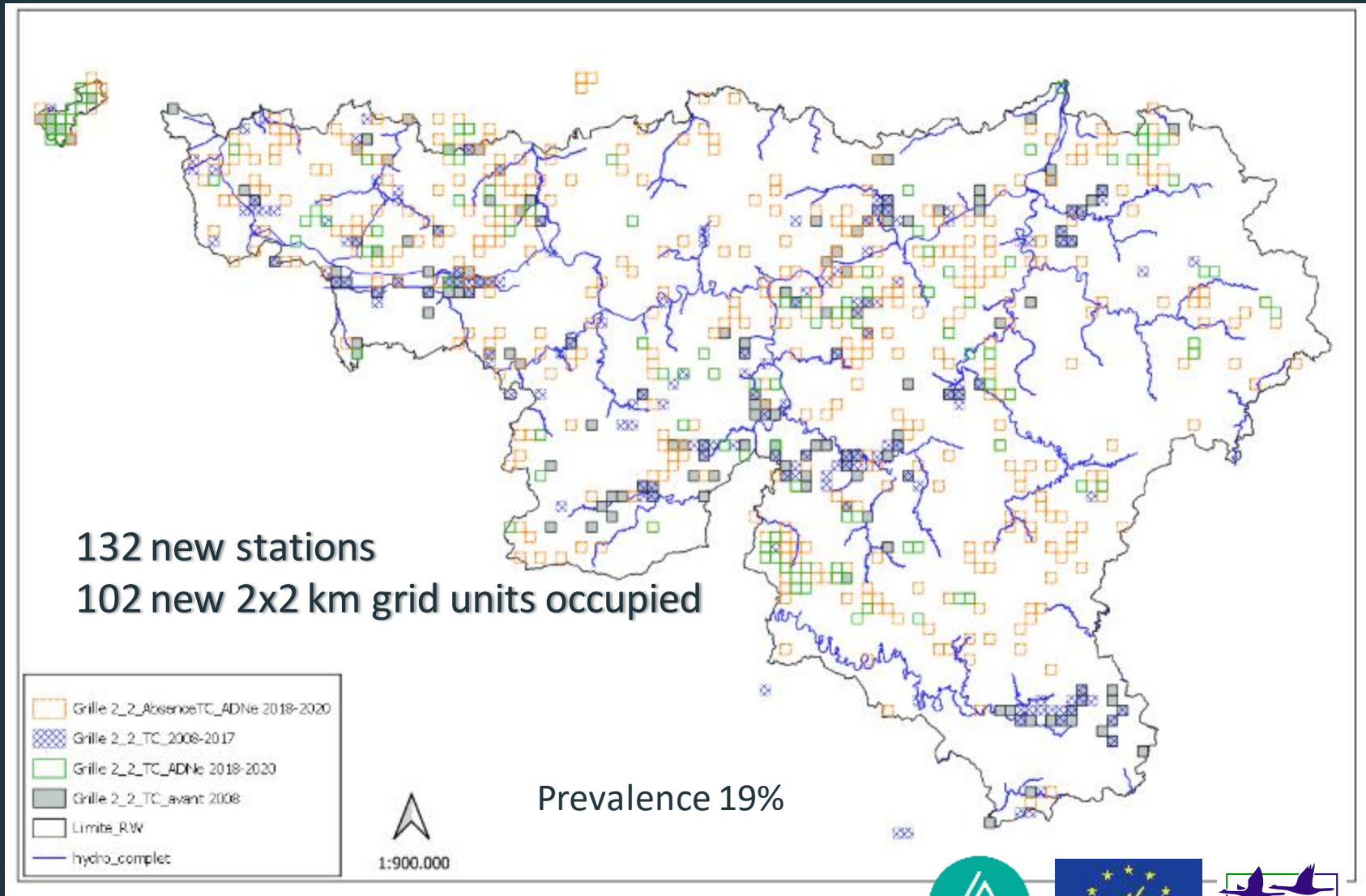
Over 60 500 km travelled

**Collaboration with several other projects: LIFE
LIQ, PNPE, PNBM, PNHP, CRD, CREL**

**20 % of sampling devoted to method testing
(positive and negative control, double-
sampling...)**

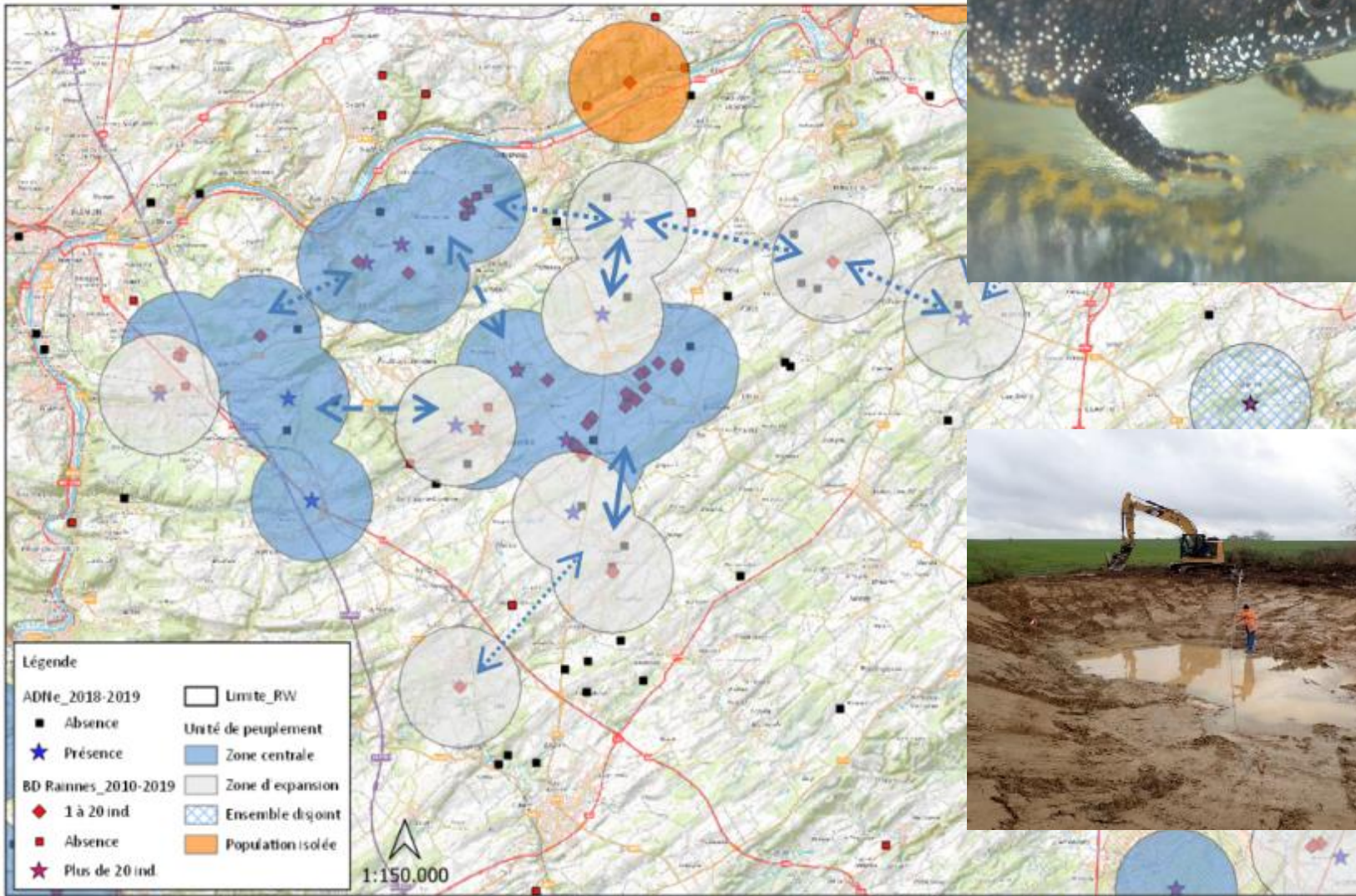


Final result *Triturus cristatus*

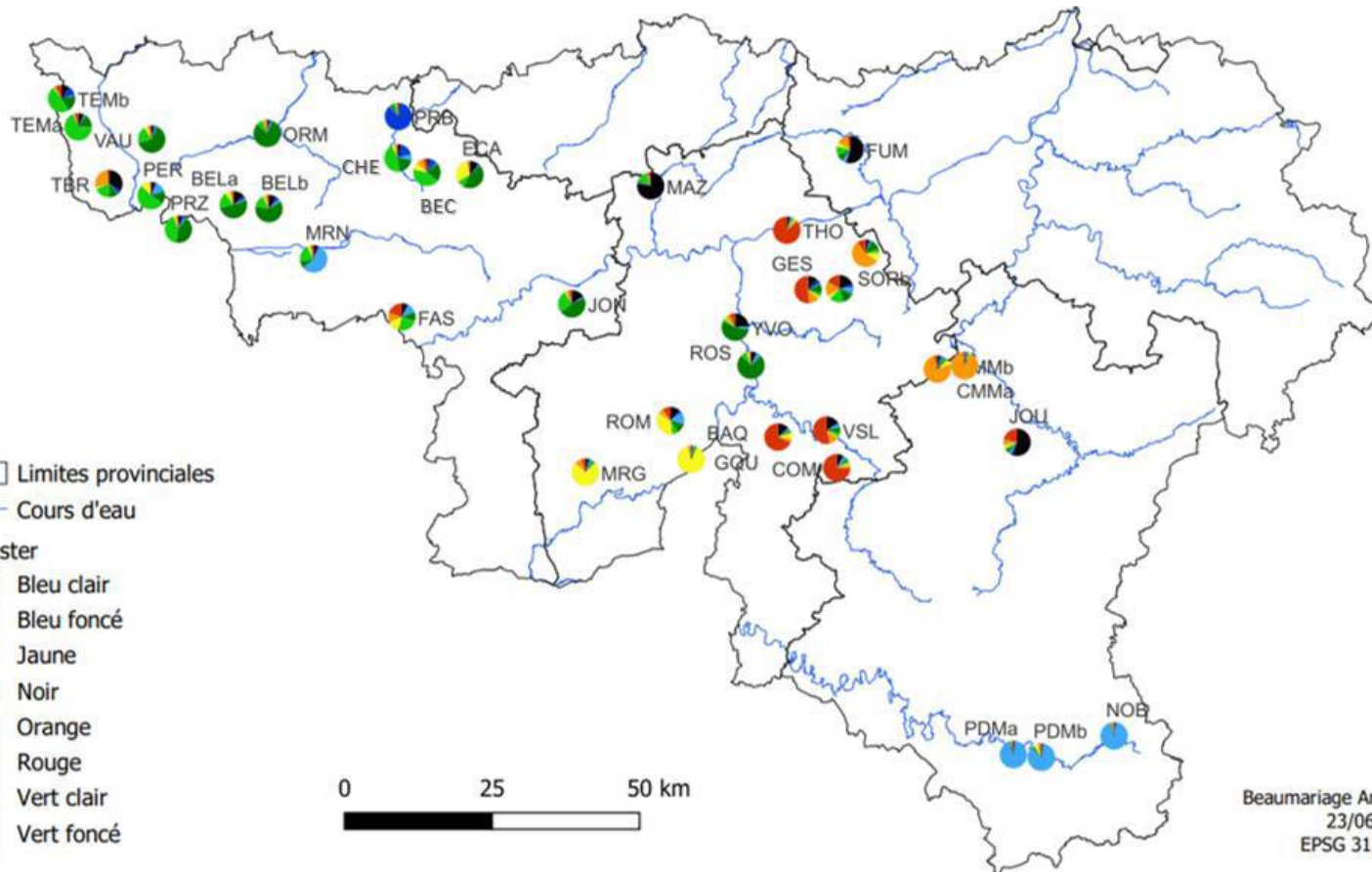


Input for the Species Action Plan

Noyau de population: sous ensemble du Condroz Namurois



Complementary study: genetic structure and diversity of the populations of *T. cristatus* in Wallonia



Beaumariage Anais
23/06/23
EPSG 31370



Comment creuser une mare pour le triton crêté



Natagriwal asbl

60 abonnés

 Abonné 

 48

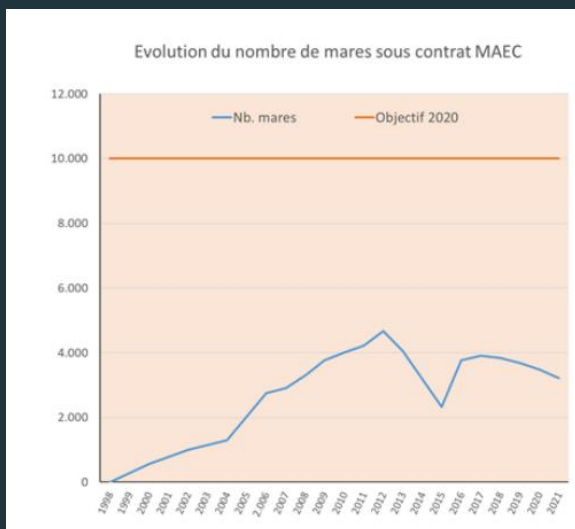


 Partager

 Télécharger



Pre-funding of RDP funding by municipalities, to convince farmers to create new ponds



New Species Action plans :



1. Winter Teal (*Anas crecca*) breeding population
 2. Corncrake (*Crex crex*)
 3. Turtle Dove (*Streptopelia turtur*)
 4. Tengmalm's Owl (*Aegolius funereus*)
 5. Whinchat (*Saxicola rubetra*)
 6. Great Grey Shrike (*Lanius excubitor*)
 7. Tree Sparrow (*Passer montanus*)
 8. Common Snipe (*Gallinago gallinago*) -wintering population
 9. Jack Snipe (*Lymnocyptes minimus*) - wintering population
-
1. Common European Adder (*Vipera berus*)
 2. Tree Frog (*Hyla arborea*)
-
1. Geoffroy's Bat (*Myotis emarginatus*)
 2. Alcatheo Bat (*Myotis alcathoe*)
 3. Brandt's bat (*Myotis brandtii*)



natagora

La nature avec vous