

# National parks in Wallonia

## Life B4B - Workshops

11/10/2023



# IUCN Management Categories

Status and existing tools

Category	Definition of Management Objective
Category Ia Strict Nature Reserve	Réserve naturelle intégrale Réserve Biologique Intégrale (Code Forestier)
Category Ib Wilderness Area	Situation inexistante en Belgique
Category II National Park	PARC NATIONAL
Category III Natural Monument/ Feature	Site classé
Category IV Habitat/Species Management Area	Réserve naturelle gérée
Category V Protected Landscape/Seascape	Site classé Natura 2000
Category VI Protected Area with Sustainable Use of Nature Resources	Parc naturel

# Definitions - IUCN International classification

## Strict nature reserve (> Cat. I et IV)

« Protected area managed mainly for scientific purposes or to protect wild resources, or protected area managed mainly for conservation purposes, with management intervention »

## National park (> Cat. II)

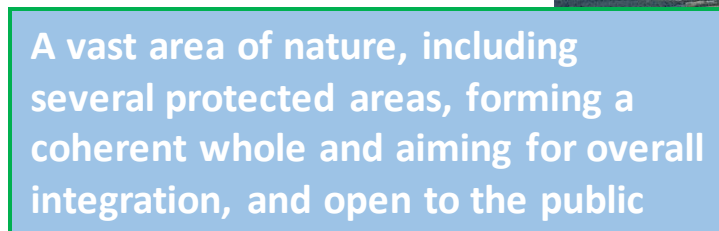
« Protecting biodiversity and the ecological systems and processes that underpin it, as well as improving educational and recreational opportunities »

## Protected landscape (> Cat. V)

« The protection and conservation of important landscapes and their associated natural and other values, created by human interaction in the context of traditional land use »



A natural area, often small, sometimes open to the public but often with restricted access and often isolated in the landscape.



A vast area of nature, including several protected areas, forming a coherent whole and aiming for overall integration, and open to the public

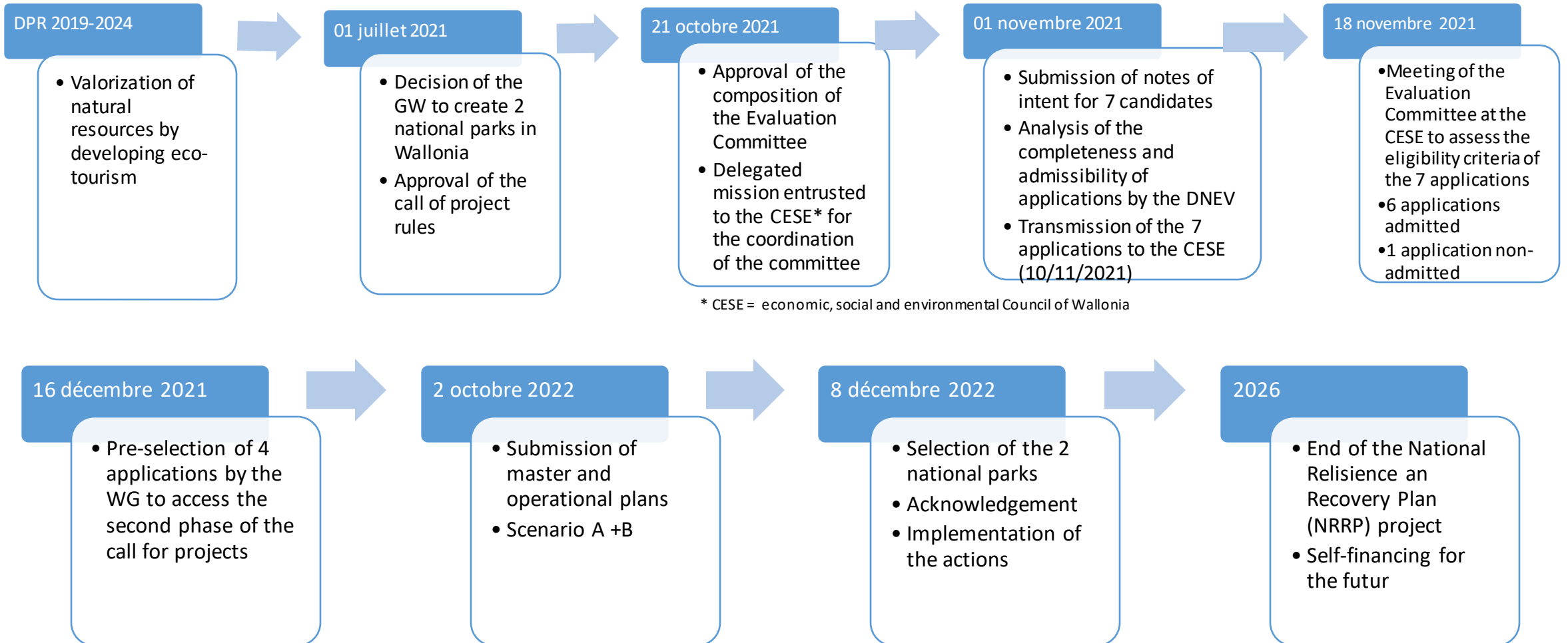


A mosaic of nature and human activity inside!

## Launch of project

- The WG decided to create 2 national parks in Wallonie (01/07/2021)
- Launch of project (01/07/2021)
- No new status but relies on the pre-existing status
- The Walloon Government is considering including it in the Nature Conservation Law (LCN)

# Steps



# Selection criteria- surface and composition

Coherent whole in terms of landscape and ecology (e.g. thanks to a system of rivers or massifs)

NP

Minimum **5 000 ha**  
(2500 ha main part  
+ x 500 ha min. additional parts)

Existing or to develop

Perimeter of minimum  
**5 000 ha**

Of which + 80% nodal zone

> 60% to the application

> 90 % of **natural zone**

**75 %** of biological interest

**40 % of**  
**protected zone**

(reserve, natural  
zone,  
Natura 2000, etc.)

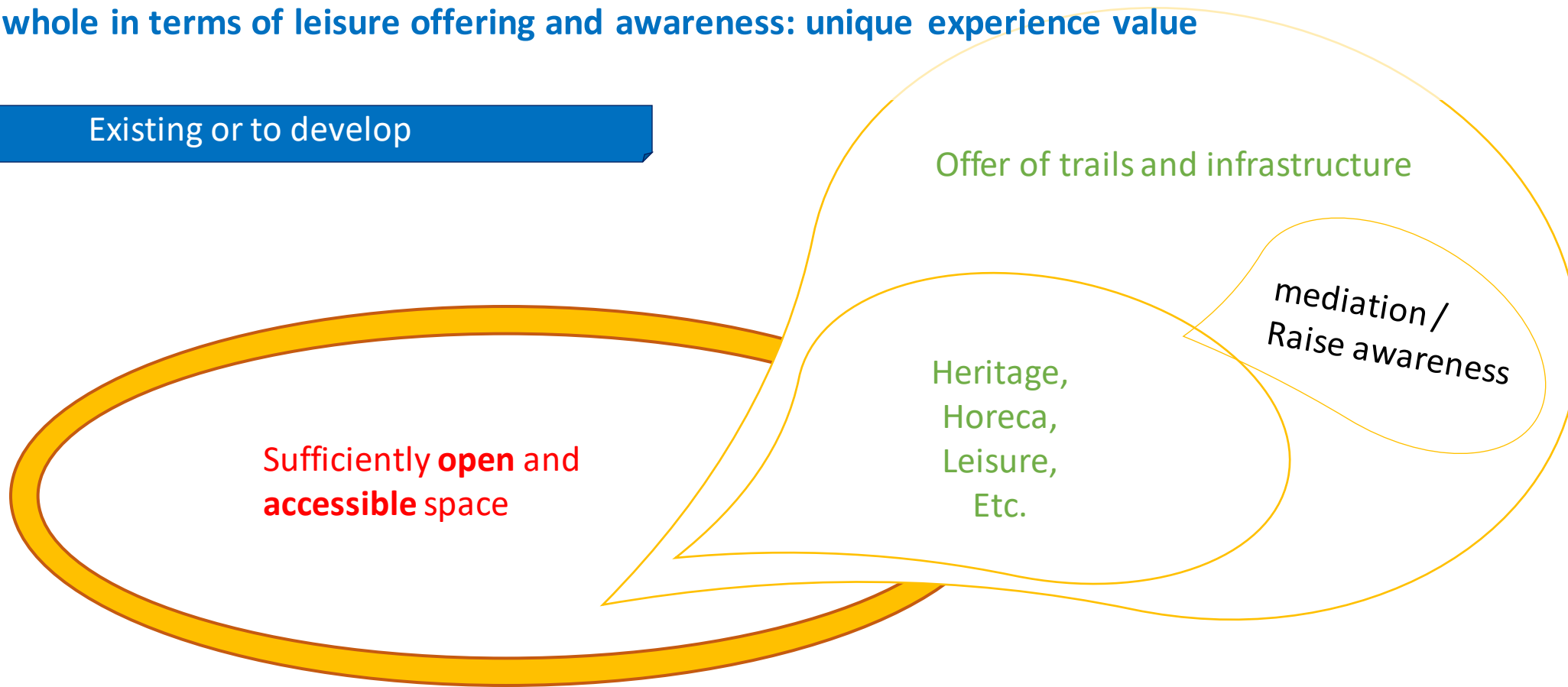
Significant % in  
free evolution

= 50% of points

# Recreation and tourism criteria

Cohesive whole in terms of leisure offering and awareness: unique experience value

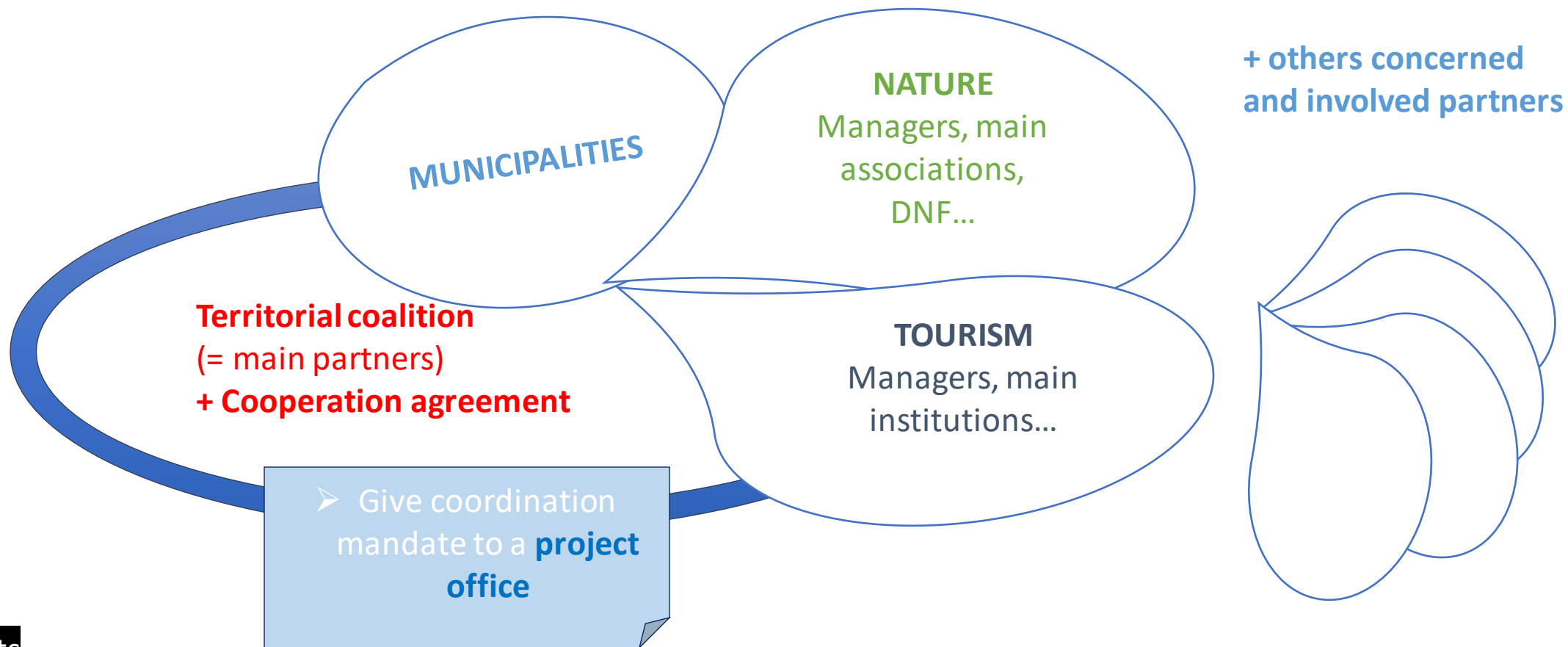
Existing or to develop



= 30% of points

# Governance criteria

Coherent whole in terms of partners: territorial coalition and project office



= 20% of points



# Composition of the evaluation committee

Composed of 14 people:

- 5 representatives of Minister of Nature, Tourism, Local authorities, Economy – Land – housing - heritage and Climate - Mobility.
- 1 representative of IUCN
- 1 representative of Europarc
- 1 representative of a foreign national park
- 1 academic representative or land expert
- 1 academic representative or ecology expert
- 1 academic representative or ecosystemic services expert
- 1 academic representative or tourism expert
- 1 academic representative or heritage expert
- 1 academic representative or economy expert

The CESE (The economic, social and environmental Council of Wallonia) was delegated by the WG to ensure the mission of coordinating the Evaluation Committee.

Representatives of the administration (DNF, DEMNA, CGT) attended Committee meetings as observers.

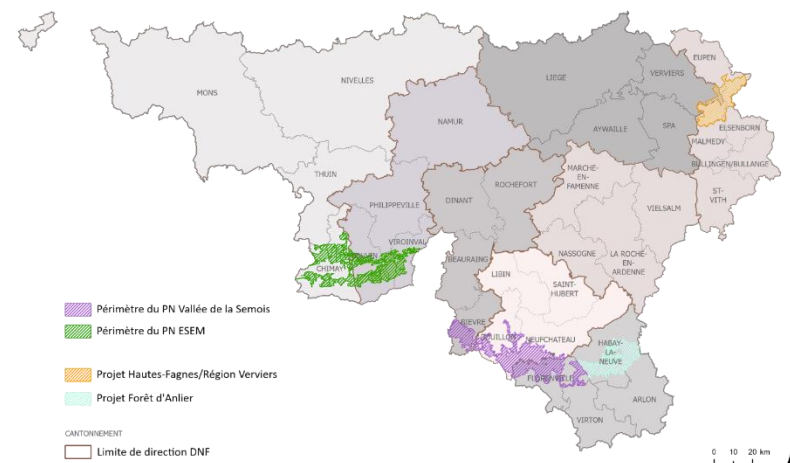
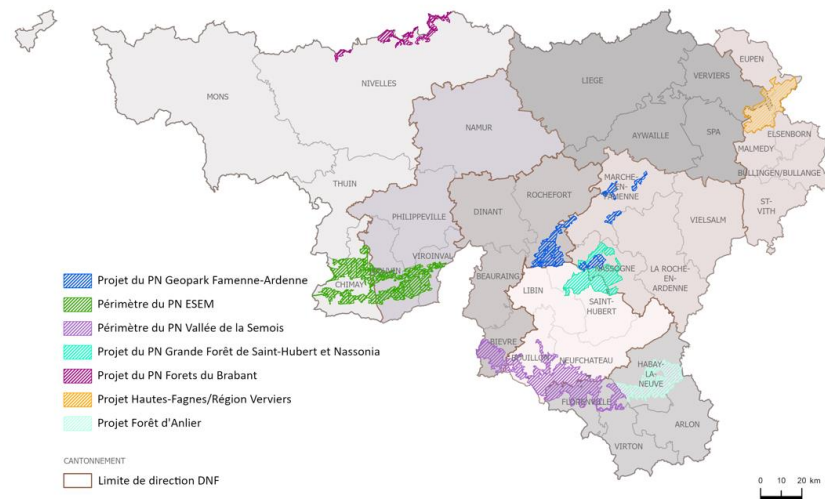
# Launch of project

1. **Note of intent** : 25 pages + annexes to demonstrate how the project meets the conditions for potential recognition as a national park, including a description of the project with a strong identity.

→ 7 submissions

2. **Evaluation committee + WG decision**  
(16/12/2021)

→ Selection of 4 candidates

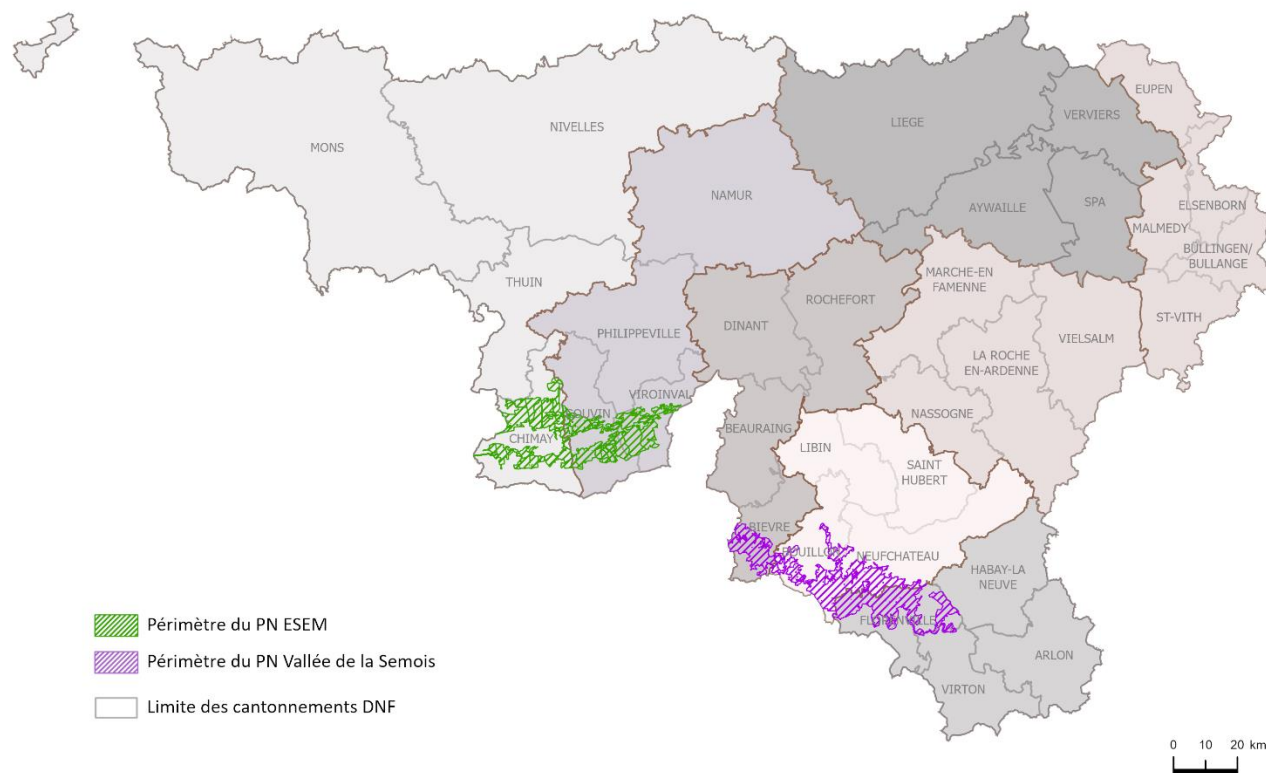


## Launch of project

3. **Master and operational plans** to define the common objective pursued with the agreement of all the partners, as well as a clear vision of the future and ambitions:
  - objectives and actions in a wide range of relevant policy areas (nature, forests, heritage, visitor management, tourism, leisure, local economy, spatial planning, climate, etc.),
  - the organisational and governance arrangements put in place and the financial plan for implementation.

# Launch of project

## 4. Evaluation committee + WG decision (08/12/2022) Selection of 2 national parks



# Launch of project

## Masterplans

- 4 x 250.000€ (NRRP)

### Scenario A (National park project)

- 2 x 14M€ from Nature (NRRP)
- 2 x 1,4M€ from Tourism



Entre-Sambre-et-Meuse  
Vallée de la Semois

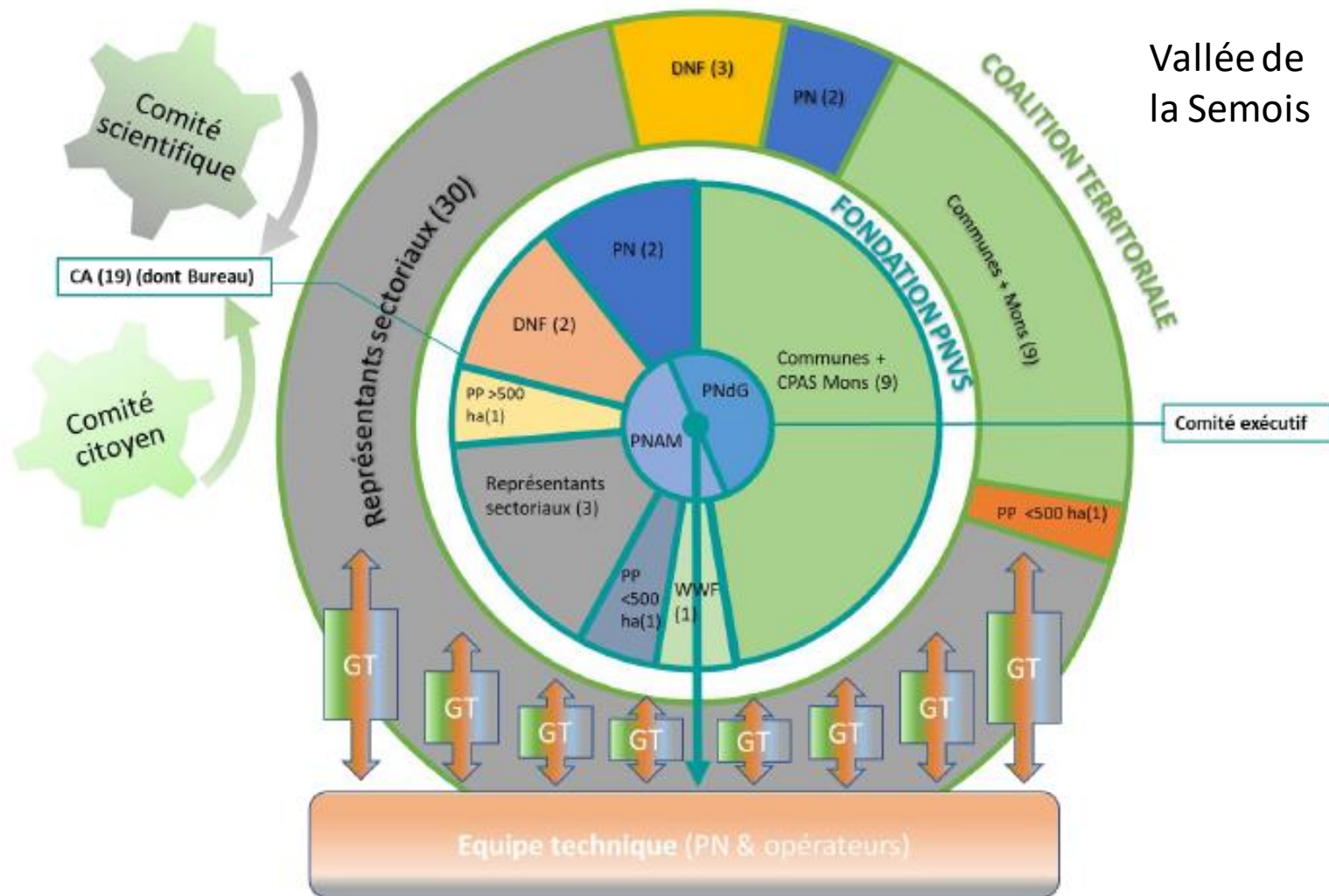
### Scenario B (nature project)

- 4 x 250.000€ (NRRP)

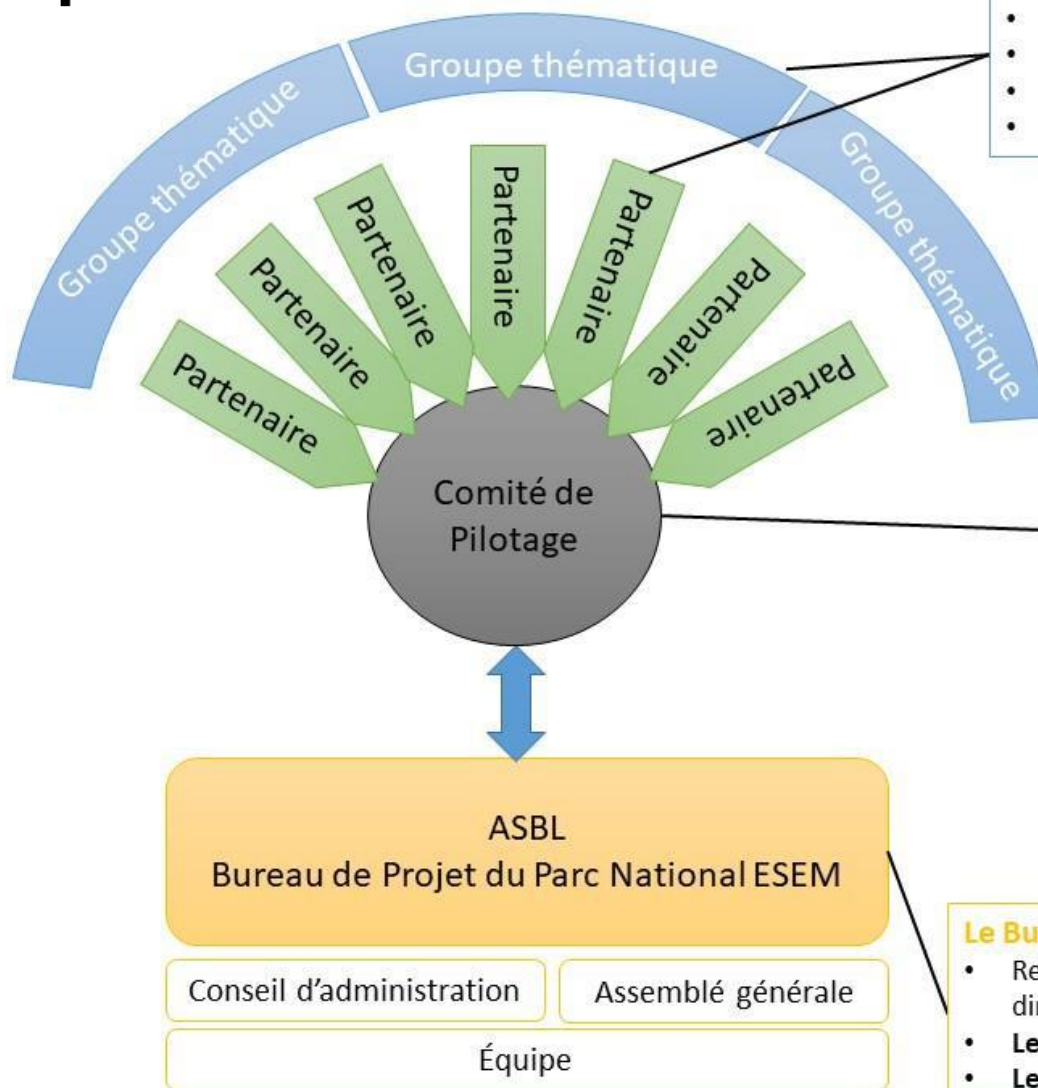


Entre-Sambre-et-Meuse  
Vallée de la Semois  
Forêt d'Anlier  
Hautes-Fagnes

# Governance of Vallée de la Semois NP



# Governance of ESEM NP



## La Coalition Large (CL)

- Signature d'une lettre de soutien au projet
- Actuellement 55 partenaires
- Participation aux groupes thématiques / ateliers de co-construction
- Participation volontaire aux actions et/ou au cofinancement

## La Coalition Territoriale (CT)

- Signature de l'accord de coopération
- Les parties prenantes (20):
  - **Partenaires communaux (5)**  
Viroinval, Couvin, Chimay, Froidchapelle et Momignies
  - **Partenaires régionaux (3)**  
les cantonnements DNF de Viroinval, Couvin et Chimay
  - **Partenaires associations nature (4)**  
les Cercles de Naturalistes de Belgique (CNB), Natagora, Ardenne & Gaume, le Cercle des Naturalistes et Astronomes amateurs de la Botte du Hainaut (CNABH)
  - **Partenaires touristiques et du patrimoine (3)**  
la Maison du Tourisme Pays des Lacs (MT), Virelles Nature, la Maison de l'urbanisme de l'arrondissement de Philippeville (MUAP)
  - **Partenaires de développement économique et territoriale (5)**  
Le Parc naturel Viroin-Hermeton (PNVH), Le Bureau Economique de la Province de Namur (BEP), la Fondation de Chimay-Wartoise (FCW), Charleroi Métropole (CM), MobilESEM
  - **Le Bureau de Projet (BP)**
- Participation au cofinancement, décision sur les lignes directrices

## Le Bureau de Projet (BP)

- Responsable pour la construction et révision des plans opérationnel et directionnel et la gestion opérationnelle et quotidienne du Parc National
- **Le Conseil d'Administration (5):** les CNB et Natagora, la MT, la FCW et le PNVH
- **Les membres de l'Assemblée Générale (1):** Mobilesem



Thank you !